

CDA Series

● 125°C 1,000~ 2,000Hrs assured

- Vertical SMD type
- Wide Temperature range
- ECDA Series : Ecological capacitors with the same characteristics as CDA

Solvent-
proof



MVK

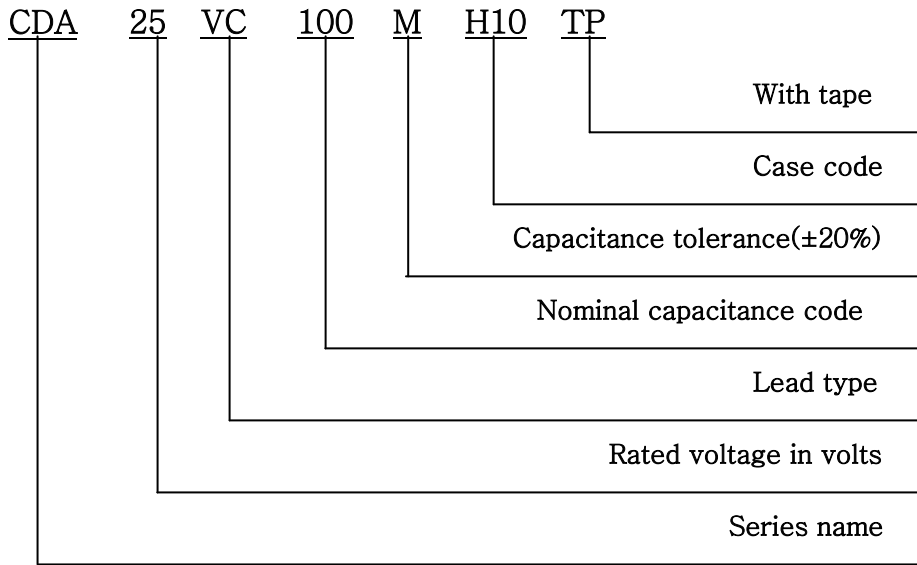
CDA

Wide Temp

SPECIFICATIONS

Item	Characteristics				
Rated Voltage Range	10 ~ 35 V _{DC}				
Operating Temperature Range	-40 ~ +125°C				
Capacitance Tolerance	±20% (M) (at 20°C, 120Hz)				
Leakage Current	I = 0.01CV(μA) or 3μA, whichever is greater Where, I : Leakage current(μA), C : Nominal capacitance(μF), V: Rated voltage(V _{DC}) (at 20°C, 2 minutes)				
Dissipation Factor Tanδ(Max.)	Rated Voltage(V _{DC})	10	16	25	35
	Tanδ(Max.)	0.24	0.20	0.16	0.14
(at 20°C, 120Hz)					
Temperature Characteristics (Max. Impedance ratio)	Rated Voltage(V _{DC})	10	16	25	35
	Z(-25°C) / Z(20°C)	4	3	2	2
	Z(-40°C) / Z(20°C)	10	8	6	4
(at 120Hz)					
Load Life	The following specifications shall be satisfied when the capacitors are restored to 20°C after the rated voltage applied with the following conditions. F60, H63 : 125°C, 1,000hours . H10, J10 : 125°C, 2,000hours Capacitance change ≤ ± 30% of the initial value Tanδ ≤ 300% of the initial specified value Leakage current ≤ The initial specified value				
Shelf Life	The following specifications shall be satisfied when the capacitors are restored to 20°C after exposing them for 1000 hours at 125°C without voltage applied. The rated voltage shall be applied to the capacitors for a minimum of 30 minutes, at least 24 hours and not more than 48 hours before the measurements. Capacitance change ≤ ± 30% of the initial value Tanδ ≤ 300% of the initial specified value Leakage current ≤ The initial specified value				
Others	Satisfied characteristics W of KS C 6421				

PART NUMBERING SYSTEM



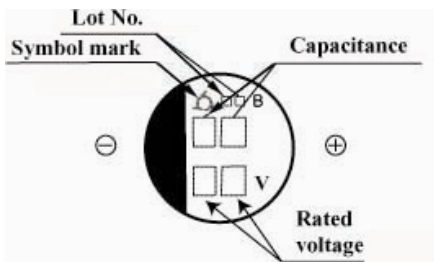
Capacitance	Code
0.1 μF	R1
0.47 μF	R47
1.0 μF	1
4.7 μF	4R7
10 μF	10
100 μF	100

Case Code	$\text{ØD} \times \text{Lmax}(\text{mm})$
F60	$\text{Ø}6.3 \times 6.0\text{L}$
H63	$\text{Ø}8 \times 6.8\text{L}$
H10	$\text{Ø}8 \times 10.5\text{L}$
J10	$\text{Ø}10 \times 10.5\text{L}$

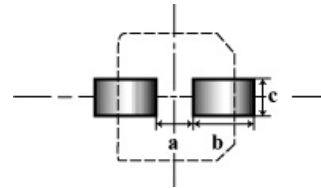
DIMENSIONS OF CDA Series (Type:VC)

DIMENSIONS

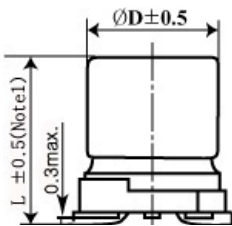
Marking



Recommended solder land on PC board

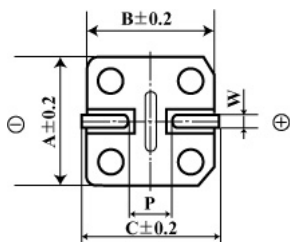


Sold land on PC board



Note 1 : $L + 0.3$ for 6.3×5.7 (F60)

Note 2 : Case Color ; Clarity Green



Case code	ØD	L	A	B	C	W	P	a	b	c
F60	6.3	5.7	6.6	6.6	7.2	0.5 ~ 0.8	1.9	1.9	3.5	1.6
H63	8	6.3	8.3	8.3	9.0	0.5 ~ 0.8	2.3	2.3	4.5	1.6
H10	8	10.0	8.3	8.3	9.0	0.7 ~ 1.1	3.1	3.1	4.2	2.2
J10	10	10.0	10.3	10.3	11	0.7 ~ 1.1	4.5	4.5	4.4	2.2

RATINGS OF CDA Series

Item μF	V_{DC}	10(1A)		16(1C)		25(1E)		35(1V)	
	Case Code	Ripple Current	Case code	Ripple Current	Case code	Ripple Current	Case code	Ripple current	
10								F60	18
22								F60	26
33						F60	30	H63	41
47			F60	28	H63	45	H10	61	
100	H63	48	H63	50	H10	84	J10	101	
220	H10	91	H10	100	J10	141			
330	J10	125	J10	145					
470	J10	150							

▲ Permissible Ripple Current(mArms / 125°C, 120Hz)

▲ Case Code

* 42Vdc is available upon request.

Please check with us about individual size and dimensions.